

# Hardy HIBSX Bench Scales

## Applications

- *Minor Ingredients or Hand-Add applications*
- *Small Batch Reactor Applications in Chemical/Biochemical*
- *Machine Filling and Dispensing*
- *Conveyor Scales*
- *Product Inspection: Checkweighing*
- *Piece Count, Portion Control*
- *Shipping*



## Features THE HARDY PROCESS TOOLBOX

The Hardy Process Toolbox is a set of productivity tools that delivers value across process weighing functions. Each tool saves time, increases accuracy, improves efficiency or reduces risk in your process weighing applications.



## Electronic calibration without test weights



### HARDY Load Sensors

- *Stainless Steel or Aluminum*
- *True Hermetic Seal or Potted*
- *IP68/69K or IP67*

## Capacities from 10 lbs (5kg) to 165 lbs (75 kg)

## Intrinsically Safe: FM IS, Class 1, Division 1

### Overload Protection

- **150% or 200% R.O.\* Overload**
- **100% R.O. Corner Loading**

(\*Rated Output)

*Hardy HIBSX Bench Scales are easy to clean, low-profile stainless steel washdown bench scales. The HIBSX series offers simplicity and robust performance for light duty industrial weighing applications. With an optimized internal 'X' design, the scales reduce the time required to sanitize them while still offering one of the lowest profiles in the industry. Hardy HIBSX Bench Scales come with RoHS compliant 304 Stainless steel hardware, frames and platters. Users may choose between stainless steel hermetically sealed, IP68/69K, C2<sup>®</sup> load cells OR aluminum, environmentally sealed, IP67 C2<sup>®</sup> load cells, depending on their application.*

Made in the USA, all Hardy HIBSX Bench Scales come standard in 12"x12" size, ranging in capacity from 10 lbs – 165 lbs (5 kg to 75 kg).

With all stainless steel construction and hazardous FM approval, the HIBSX with a stainless steel load cell is built for wash down applications and hazardous environments. With an IP67 aluminum load cell, the HIBSX is designed for use in dry and dusty hazardous environments. Each load cell is also FM approved and has a +/- 0.02% accuracy specification.

Hardy has built its C2<sup>®</sup> weight-free calibration technology into every scale, delivering the lowest total cost of ownership on the market. C2 calibration saves time during commissioning and replacement, removes personnel from processing areas, and keeps your process cleaner by eliminating the need for potentially contaminated test weights.

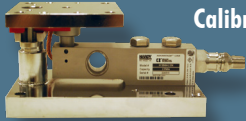
To ensure durability in industrial applications, Hardy has performed corner, overload and cycle testing to over 8 million cycles. The HIBSX series is ideal for manual checkweighing, piece portioning, counting, and adding minor ingredients (to a process or a batch).

# COMPONENTS TO COMPLETE YOUR HARDY SYSTEM

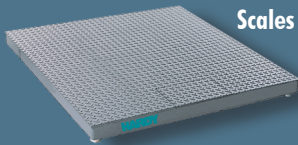
## Hardy Bench Scales, Floor Scales and Load Points

Hardy carries a wide variety of strain gauge load points and scale mounts to accommodate your application requirements.

**ADVANTAGE® Series with C2 Calibration**



**Bench & Floor Scales**



## Weighing Instruments Dedicated to Your Applications

Controllers, Weigh Modules, Weight Processors & Transmitters

**Allen-Bradley® Plug-in Weigh Scale Modules**



**HI 3000 & HI 4000 Controllers and HI 6000 Series Weight Processors**



## SPECIFICATIONS

### Common Specifications to All Scales

- 304 Stainless Steel frame and platter (all models)
- Size: 12" x 12"
- Load Cell Error Specification < +/- 0.02%
- Weight: 22 lbs (9.98 kg)
- Cable Platform to Instrument: 10 ft (SS Models) or 6.5 ft. (AL Models)

### Deck Height

- 12" x 12": SS: 2.95" (75 mm) adjustable
- 12" x 12": AL: 2.02" (51.3 mm) adjustable

### Capacity Range

- SS Versions: 10 lbs to 165 lbs (5 to 75 kg)
- AL Versions: 10 lbs to 100 lbs (5 to 45 kg)

### Rated Output

- Overload: 200% R.O. with Stainless Steel HISP6  
150% R.O. with Aluminum HISPA22
- Corner loading: 100% R.O.

### Load Sensors

- SS Versions: C2® stainless steel, hermetically sealed IP68/IP69K
- AL Versions: C2® aluminum, environmentally potted, IP67

### Warranty

- Two year limited warranty

### Approvals

- FM IS Hazardous Class I, Div 1 Load Cells
- RoHS 3 and REACH Compliant

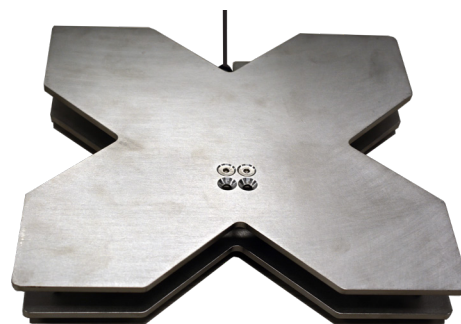
### Shipping Weight

- 12" x 12": 22 lbs (9.98 kg)

## Hardy HIBSX Bench Scale Sizes and Capacities

SS Versions	Capacity	Load Cell	Load Cell Material	Safe Load Limit
HIBSX-12SS-SS-5KG	10 lbs/5 kg	HISP6-10	17-4PH SS	10 lbs
HIBSX-12SS-SS-15KG	30 lbs/15 kg	HISP6-20	17-4PH SS	55 lbs
HIBSX-12SS-SS-40KG	100 lbs/45kg	HISP6-50	17-4PH SS	187 lbs
HIBSX-12SS-SS-75KG	165 lbs/75 kg	HISP6-100	17-4PH SS	319 lbs
AL Versions	Capacity	Load Cell	Load Cell Material	Safe Load Limit
HIBSX-12SS-AL-5KG	10 lbs/5 kg	SPA22-10	2024 AL	10 lbs
HIBSX-12SS-AL-15KG	30 lbs/15 kg	SPA22-20	2024 AL	38.5 lbs
HIBSX-12SS-AL-25KG	50 lbs/25 kg	SPA22-30	2024 AL	71.5lbs
HIBSX-12SS-AL-35KG	75 lbs/35 kg	SPA22-40	2024 AL	104.5 lbs
HIBSX-12SS-AL-45KG	100 lbs/45 kg	SPA22-50	2024 AL	137.5 lbs

Load Cell Specifications	HISP6	HISPA22
Rated Output (ES)	2 ± 0.10 mV/V	2 ± 10% mV/V
Non-Linearity	< ± 0.0166 % R.O.	< ± 0.0166 % R.O.
Hysteresis	< ± 0.0166 % R.O.	< ± 0.0166 % R.O.
Zero Balance	< ± 5.0 % R.O.	< ± 5.0 % R.O.
Combined Error	< ± 0.02 % R.O.	< ± 0.02 % R.O.
Creep @ 30 Min.	< ± 0.0166 % R.O.	< ± 0.0166 % R.O.
Temp Effect Output	< ± 0.0112 % R.O./C	< ± 0.0233 % R.O./C
Temp Effect Sensitivity	< ± 0.010 % R.O./C	< ± 0.010 % R.O./C
Input Resistance	1100 ± 50 ohm	413 ± 20 ohm
Output Resistance	960 ± 50 ohm	350 ± 25 ohm
Insulation Resistance	≥ 5000 Mohm	≥ 5000 Mohm
Excitation	5 - 15 vdc	5 - 15 vdc
Safe Load Limit	200 % Emax	150 % Emax
Safe Side Load	100 % Emax	100 % Emax
Hazardous	FM IS, Class1, Div 1	FM IS, Class1, Div 1
Approvals	IP68/IP69K	IP67



The HIBSX bench scale is designed with a durable all stainless-steel 'X' construction

**HARDY**  
**PROCESS SOLUTIONS**  
Measurement • Automation • Productivity

### Hardy Process Solutions

10075 Mesa Rim Road  
San Diego, CA 92121  
tel. +1-858-278-2900  
tel. 800-821-5831

www.hardysolutions.com  
hardyinfo@hardysolutions.com



All information within is subject to change without notice. C2, INTEGRATED TECHNICIAN and ADVANTAGE are registered trademarks of Hardy Process Solutions, Inc.. Allen-Bradley, CompactLogix, MicroLogix and Silver Technology Partner are trademarks of Rockwell Automation, Inc. All other trademarks or registered trademarks are the property of their respective owners.

HAR BEN 0522  
0400-0040-01A